

MEDICAL GAS WALL OUTLET QUICK CONNECT PURITAN-BENNETT® COMPATIBLE

Features

- Accepts only Puritan-Bennett® gas specific adapters
- Indexed to prevent interchangeability of gas services
- Universal rough-in accepts quick connection (Chemetron®, Ohmeda®, Puritan-Bennett®) or DISS latch valve assemblies
- Modular design capability
- 100% hydrostatically tested
- Complies with NFPA 99 and CGA G-4.1 standards



Specifications

Medical gas outlet(s) shall be manufactured by Genstar Technologies Co., Inc. (GENTEC®). Wall outlet shall be designed for concealed piping installation and available for services indicated.

The latch valve assembly shall be Puritan-Bennett quick connect compatible and accept only gas specific Puritan-Bennett type quick connect adapters. Each latch valve assembly shall be color-coded for ease of gas identification per the appropriate standards (US or ISO). Latch valve assemblies shall have gas specific pin indexing corresponding to the rough-in assembly to prevent interchangeability of gas services and shall adjust up to 1" for variations in wall thickness.

Universal rough-in assembly shall include the wall rough-in plate (16 ga.) with inlet tubing silver brazed to the outlet body. Inlet tubing shall be type "K" copper, 1/2" (12.7 mm) OD, extend 6-1/2 inches (165 mm), and swivel 360° for ease of installation. Rough-in assembly shall accept only the specified gas service by use of indexes. Rough-in assembly shall be of modular design to permit on-site ganging of multiple outlets with assurance of accurate alignment

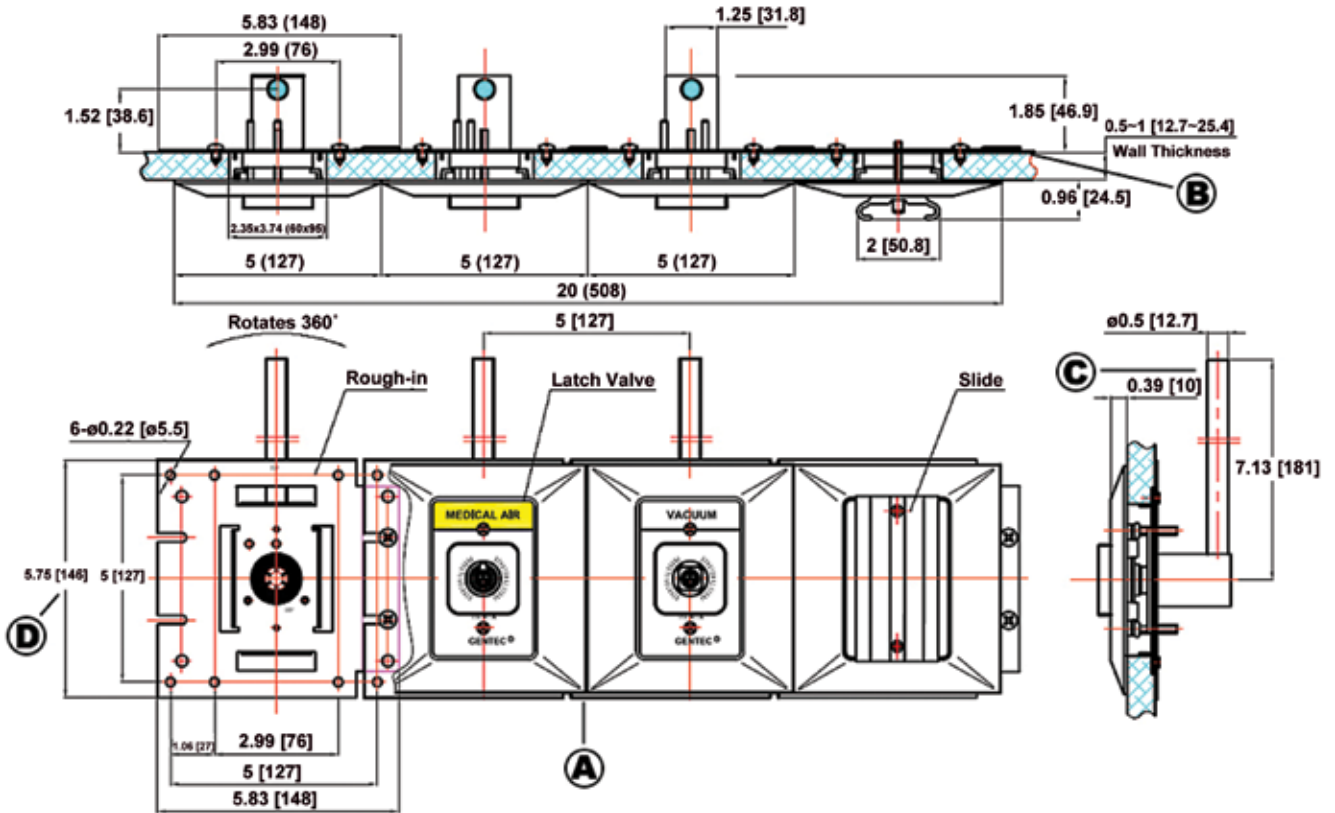
and providing 5" centerline spacing. A dust plug and cover shall be provided to protect rough-in assembly from contamination during handling and installation at the job site.

Rough-in assemblies shall accept any latch valve assembly of the same gas service. The latch valve assembly shall be interchangeable, allowing conversion from one connection style to another without shutting down the medical gas system.

All positive pressure gas outlets shall have a primary and secondary check valve, where the secondary valve in the rough-in assembly allows servicing of the latch valve assembly without having to disrupt gas service to the outlet.

Complete outlet shall be delivered to the customer in a gas specific rough-in assembly, a matching gas specific latch valve assembly, both cleaned for oxygen use and in a sealed package, and a trim plate. All assemblies shall be 100% tested for leaks, manufactured to comply with the latest edition of NFPA 99, and UL Listed.

Dimensions



Dimensional Data Notes:

- A. Additional support needed if ganging more than 3 outlets
- B. Wall thickness may vary from 1/2" to 1" (12.7 mm to 25.4 mm)
- C. 1/2" O.D. (3/8" Nominal) type K cooper inlet tube allows 360° swivel on outlet body for entry from any angle
- D. Inch (mm)

Ordering Information

Puritan-Bennett Compatible		
Gas Service	Catalog Number	Quantity
Oxygen	3824U-O	
Vacuum	3824U-V	
Medical Air	3824U-A	
Nitrous Oxide	3824E-2	
WAGD	3824U-W	
Slide	3820-SLD	

Material

Latch Valve	Rough-in	Trim Plate
Aluminum	Stainless Steel	Cast Aluminum
Zinc Alloy	ABS Plastic	Powder Coating
ABS Plastic		
Steel/Brass+Plating		
Stainless Steel		
Brass		
Neoprene		
Rubber		

Ordering Information for Complete Wall Outlets, (Includes Latch Valve Assembly, Trim Plate and Rough-in Assembly)

Note: US colors listed. For ISO 32 colors replace "U" with "E" in the above catalog numbers.



MEDICAL GAS WALL OUTLET QUICK CONNECT CHEMETRON® COMPATIBLE

Features

- Accepts only Chemetron® gas specific adapters
- Indexed to prevent interchangeability of gas services
- Universal rough-in accepts quick connection (Chemetron®, Ohmeda®, Puritan-Bennett®) or DISS latch valve assemblies
- Modular design capability
- 100% hydrostatically tested
- Complies with NFPA 99 and CGA G-4.1 standards

Specifications

Medical gas outlet(s) shall be manufactured by Genstar Technologies Co., Inc. (GENTEC®). Wall outlet shall be designed for concealed piping installation and available for services indicated.

The latch valve assembly shall be Chemetron quick connect compatible and accept only gas specific Chemetron type quick connect adapters. Each latch valve assembly shall be color-coded for ease of gas identification per the appropriate standards (US or ISO). Latch valve assemblies shall have gas specific pin indexing corresponding to the rough-in assembly to prevent interchangeability of gas services and shall adjust up to 1" for variations in wall thickness.

Universal rough-in assembly shall include the wall rough-in plate (16 ga.) with inlet tubing silver brazed to the outlet body. Inlet tubing shall be type "K" copper, 1/2" (12.7 mm) OD, extend 6-1/2 inches (165 mm), and swivel 360° for ease of installation. Rough-in assembly shall accept only the specified gas service by use of indexes. Rough-in assembly shall be of modular design to permit on-site ganging of multiple outlets with assurance of accurate alignment



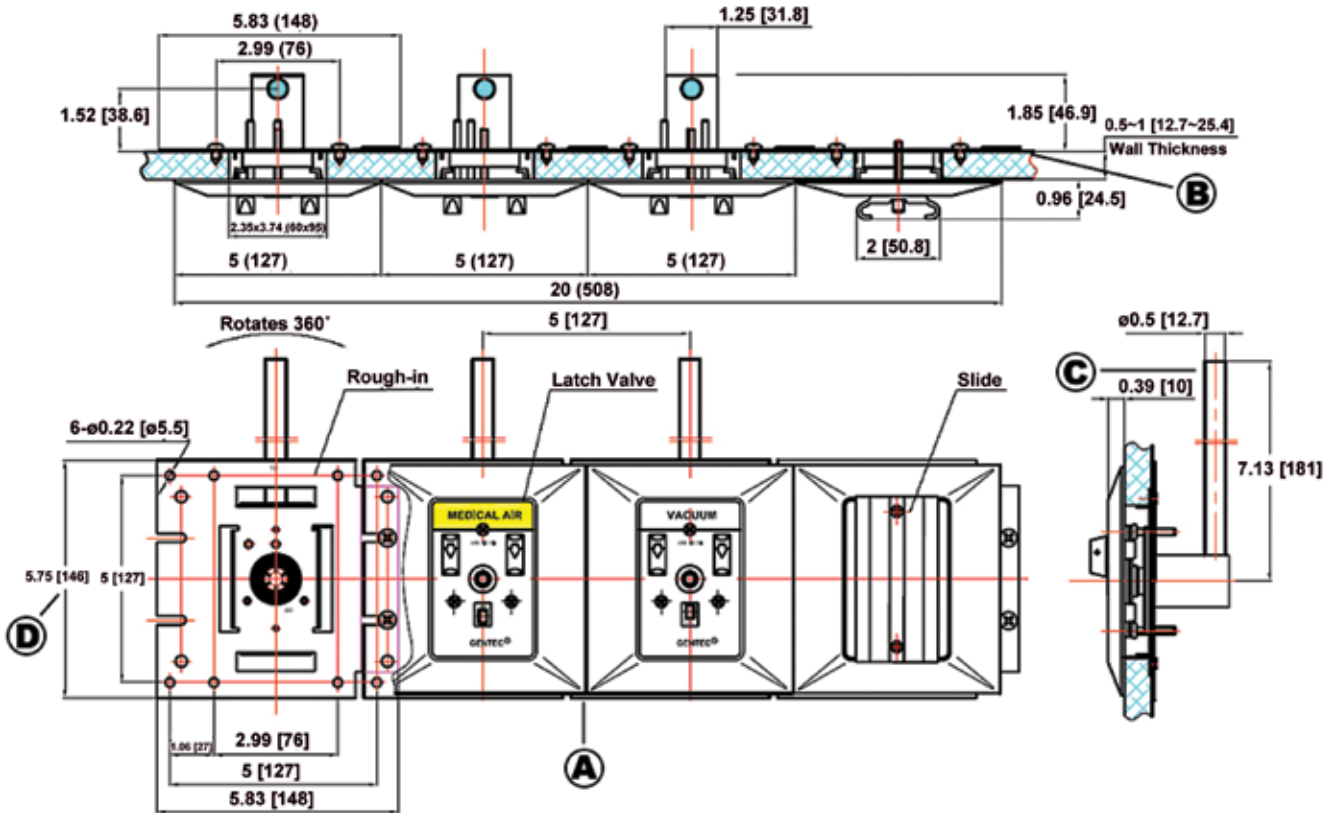
and providing 5" centerline spacing. A dust plug and cover shall be provided to protect rough-in assembly from contamination during handling and installation at the job site.

Rough-in assemblies shall accept any latch valve assembly of the same gas service. The latch valve assembly shall be interchangeable, allowing conversion from one connection style to another without shutting down the medical gas system.

All positive pressure gas outlets shall have a primary and secondary check valve, where the secondary valve in the rough-in assembly allows servicing of the latch valve assembly without having to disrupt gas service to the outlet.

Complete outlet shall be delivered to the customer in a gas specific rough-in assembly, a matching gas specific latch valve assembly, both cleaned for oxygen use and in a sealed package, and a trim plate. All assemblies shall be 100% tested for leaks, manufactured to comply with the latest edition of NFPA 99, and UL Listed.

Dimensions



Dimensional Data Notes:

- A. Additional support needed if ganging more than 3 outlets
- B. Wall thickness may vary from 1/2" to 1" (12.7 mm to 25.4 mm)
- C. 1/2" O.D. (3/8" Nominal) type K cooper inlet tube allows 360° swivel on outlet body for entry from any angle
- D. Inch (mm)

Ordering Information

Chemetron Compatible		
Gas Service	Catalog Number	Quantity
Oxygen	3823U-O	
Vacuum	3823U-V	
Medical Air	3823U-A	
Nitrous Oxide	3823E-2	
WAGD	3823U-W	
Slide	3820-SLD	

Material

Latch Valve	Rough-in	Trim Plate
Aluminum	Stainless Steel	Cast Aluminum
Zinc Alloy	ABS Plastic	Powder Coating
ABS Plastic		
Steel/Brass+Plating		
Stainless Steel		
Brass		
Neoprene		
Rubber		

Ordering Information for Complete Wall Outlets, (Includes Latch Valve Assembly, Trim Plate and Rough-in Assembly)

Note: US colors listed. For ISO 32 colors replace "U" with "E" in the above catalog numbers.



MEDICAL GAS WALL OUTLET QUICK CONNECT OHMEDA® COMPATIBLE

Features

- Accepts only Ohmeda® gas specific adapters
- Indexed to prevent interchangeability of gas services
- Universal rough-in accepts quick connection (Chemetron®, Ohmeda®, Puritan-Bennett®) or DISS latch valve assemblies
- Modular design capability
- 100% hydrostatically tested
- Complies with NFPA 99 and CGA G-4.1 standards



Specifications

Medical gas outlet(s) shall be manufactured by Genstar Technologies Co., Inc. (GENTEC®). Wall outlet shall be designed for concealed piping installation and available for services indicated.

The latch valve assembly shall be Ohmeda quick connect compatible and accept only gas specific Ohmeda type quick connect adapters. Each latch valve assembly shall be color-coded for ease of gas identification per the appropriate standards (US or ISO). Latch valve assemblies shall have gas specific pin indexing corresponding to the rough-in assembly to prevent interchangeability of gas services and shall adjust up to 1" for variations in wall thickness.

Universal rough-in assembly shall include the wall rough-in plate (16 ga.) with inlet tubing silver brazed to the outlet body. Inlet tubing shall be type "K" copper, 1/2" (12.7 mm) OD, extend 6-1/2 inches (165 mm), and swivel 360° for ease of installation. Rough-in assembly shall accept only the specified gas service by use of indexes. Rough-in assembly shall be of modular design to permit on-site ganging of multiple outlets with assurance of accurate alignment

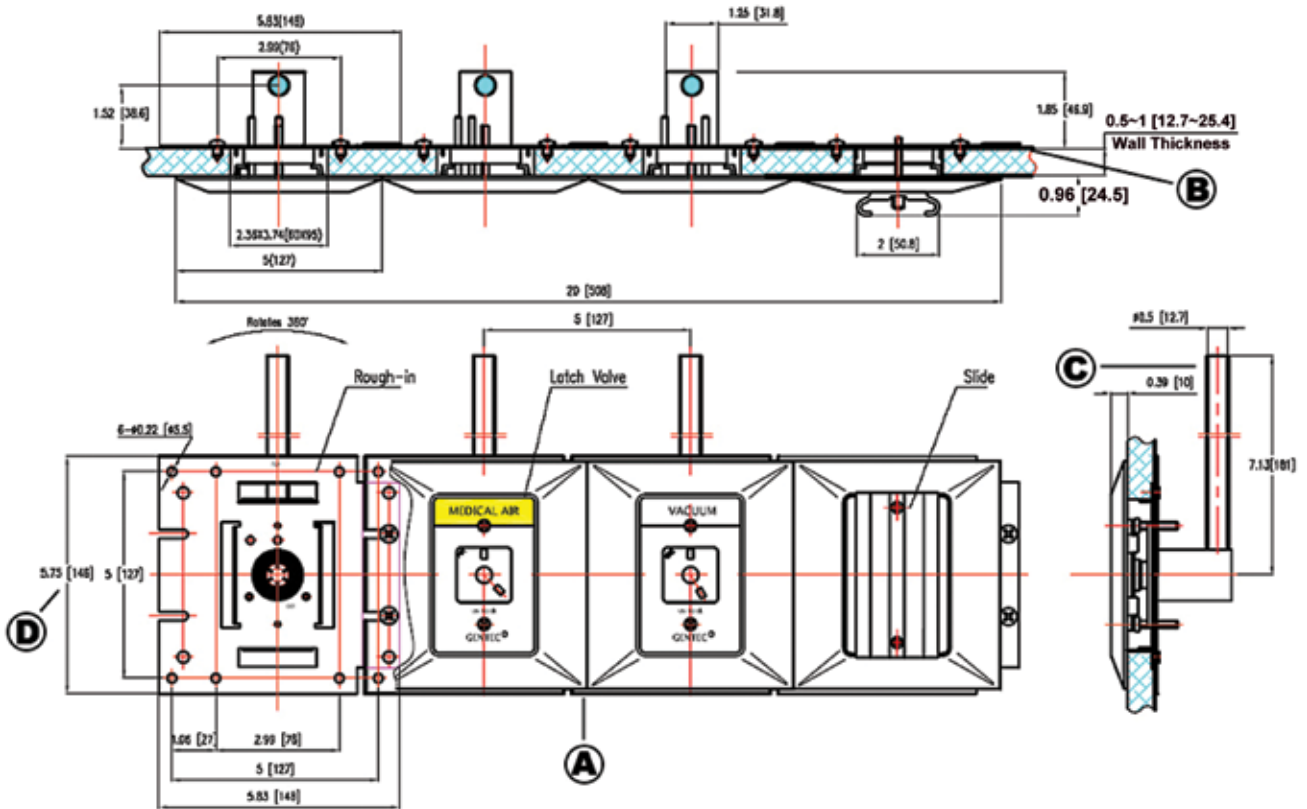
and providing 5" centerline spacing. A dust plug and cover shall be provided to protect rough-in assembly from contamination during handling and installation at the job site.

Rough-in assemblies shall accept any latch valve assembly of the same gas service. The latch valve assembly shall be interchangeable, allowing conversion from one connection style to another without shutting down the medical gas system.

All positive pressure gas outlets shall have a primary and secondary check valve, where the secondary valve in the rough-in assembly allows servicing of the latch valve assembly without having to disrupt gas service to the outlet.

Complete outlet shall be delivered to the customer in a gas specific rough-in assembly, a matching gas specific latch valve assembly, both cleaned for oxygen use and in a sealed package, and a trim plate. All assemblies shall be 100% tested for leaks, manufactured to comply with the latest edition of NFPA 99, and UL Listed.

Dimensions



Dimensional Data Notes:

- A. Additional support needed if ganging more than 3 outlets
- B. Wall thickness may vary from 1/2" to 1" (12.7 mm to 25.4 mm)
- C. 1/2" O.D. (3/8" Nominal) type K cooper inlet tube allows 360° swivel on outlet body for entry from any angle
- D. Inch (mm)

Ordering Information

Ohmeda Compatible		
Gas Service	Catalog Number	Quantity
Oxygen	3821U-O	
Vacuum	3821U-V	
Medical Air	3821U-A	
Nitrous Oxide	3821E-2	
WAGD	3821U-W	
Slide	3820-SLD	

Material

Latch Valve	Rough-in	Trim Plate
Aluminum	Stainless Steel	Cast Aluminum
Zinc Alloy	ABS Plastic	Powder Coating
ABS Plastic		
Steel/Brass+Plating		
Stainless Steel		
Brass		
Neoprene		
Rubber		

Ordering Information for Complete Wall Outlets, (Includes Rough-in, Trim Plate and Latch Valve Assembly)

Note: US colors listed. For ISO 32 colors replace "U" with "E" in the above catalog numbers.



MEDICAL GAS WALL OUTLET DISS (Diameter Index Safety System)

Features

- Accepts only DISS gas specific adapters
- Indexed to prevent interchangeability of gas services
- Universal rough-in accepts quick connection (Chemetron®, Ohmeda®, Puritan-Bennett®) or DISS latch valve assemblies
- Modular design capability
- 100% hydrostatically tested
- Complies with NFPA 99 and CGA G-4.1 standards



Specifications

Medical gas outlet(s) shall be manufactured by Genstar Technologies Co., Inc. (GENTEC®). Wall outlet shall be designed for concealed piping installation and available for services indicated.

The latch valve assembly shall be Compressed Gas Association (CGA) Diameter Index Safety System (DISS) threaded connectors and accept only gas specific type nut and nipple adapters. Each latch valve assembly shall be color-coded for ease of gas identification per the appropriate standards (US or ISO). Latch valve assemblies shall have gas specific pin indexing corresponding to the rough-in assembly to prevent interchangeability of gas services and shall adjust up to 1" for variations in wall thickness.

Universal rough-in assembly shall include the wall rough-in plate (16 ga.) with inlet tubing silver brazed to the outlet body. Inlet tubing shall be type "K" copper, 1/2" (12.7 mm) OD, extend 6-1/2 inches (165 mm), and swivel 360° for ease of installation. Rough-in assembly shall accept only the specified gas service by use of indexes. Rough-in assembly shall be of modular design to permit on-site ganging of multiple outlets with assurance of accurate alignment

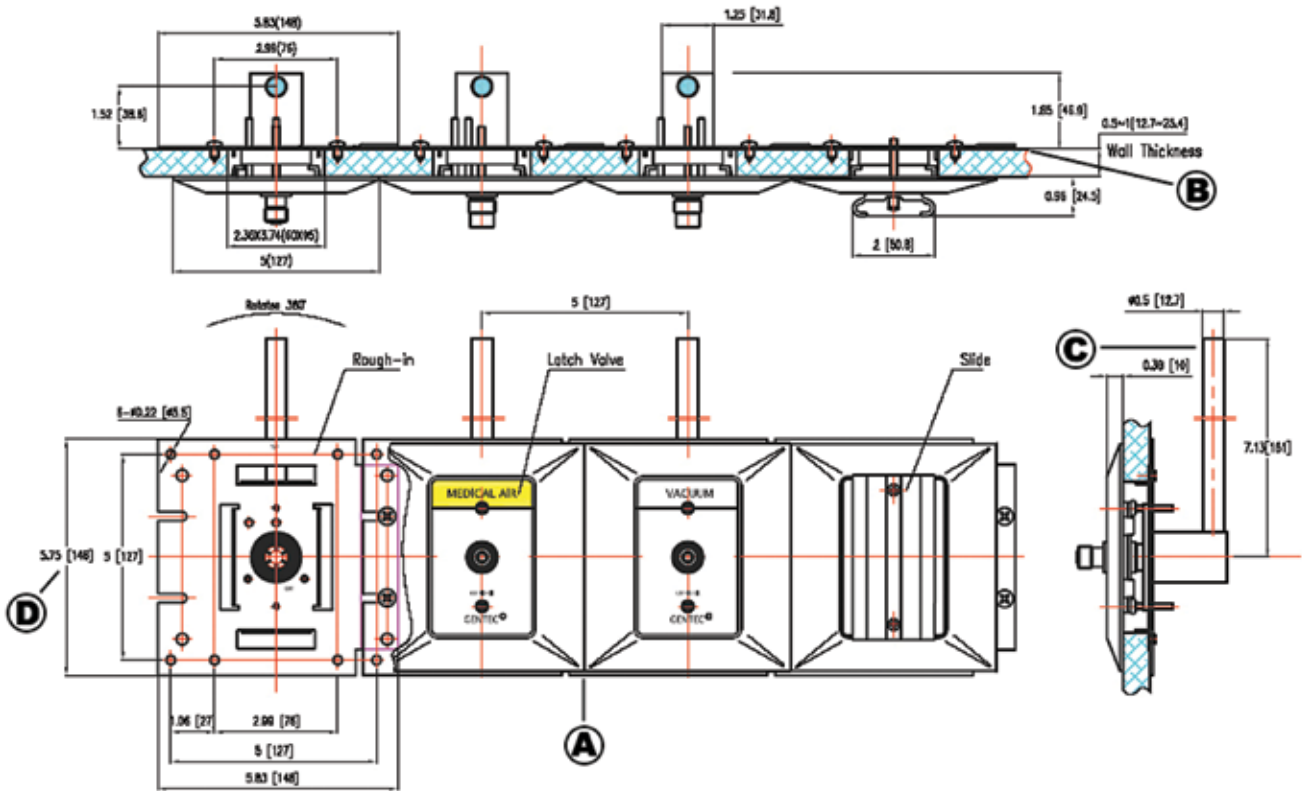
and providing 5" centerline spacing. A dust plug and cover shall be provided to protect rough-in assembly from contamination during handling and installation at the job site.

Rough-in assemblies shall accept any latch valve assembly of the same gas service. The latch valve assembly shall be interchangeable, allowing conversion from one connection style to another without shutting down the medical gas piping system.

All positive pressure gas outlets shall have a primary and secondary check valve, where the secondary valve in the rough-in assembly allows servicing of the latch valve assembly without having to disrupt gas service to the outlet.

Complete outlet shall be delivered to the customer in a gas specific rough-in assembly, a matching gas specific latch valve assembly, both cleaned for oxygen use and in a sealed package, and a trim plate. All assemblies shall be 100% tested for leaks, manufactured to comply with the latest edition of NFPA 99, and UL Listed.

Dimensions



Dimensional Data Notes:

- A. Additional support needed if ganging more than 3 outlets
- B. Wall thickness may vary from 1/2" to 1" (12.7 mm to 25.4 mm)
- C. 1/2" O.D. (3/8" Nominal) type K cooper inlet tube allows 360° swivel on outlet body for entry from any angle
- D. Inch (mm)

Ordering Information

DISS Standard		
Gas Service	Catalog Number	Quantity
Oxygen	3822U-O	
Vacuum	3822U-V	
Medical Air	3822U-A	
Nitrous Oxide	3822E-2	
WAGD	3822U-W	
Carbon Dioxide	3822E-C	
Nitrogen	3822E-N	
Slide	3820-SLD	

Material

Latch Valve	Rough-in	Trim Plate
Aluminum	Stainless Steel	Cast Aluminum
ABS Plastic	ABS Plastic	Powder Coating
Steel/Brass+Plating		
Stainless Steel		
Brass		
Neoprene		
Rubber		

Ordering Information for Complete Wall Outlets, (Includes Latch Valve Assembly, Trim Plate and Rough-in Assembly)

Note: US colors listed. For ISO 32 colors replace "U" with "E" in the above catalog numbers.

